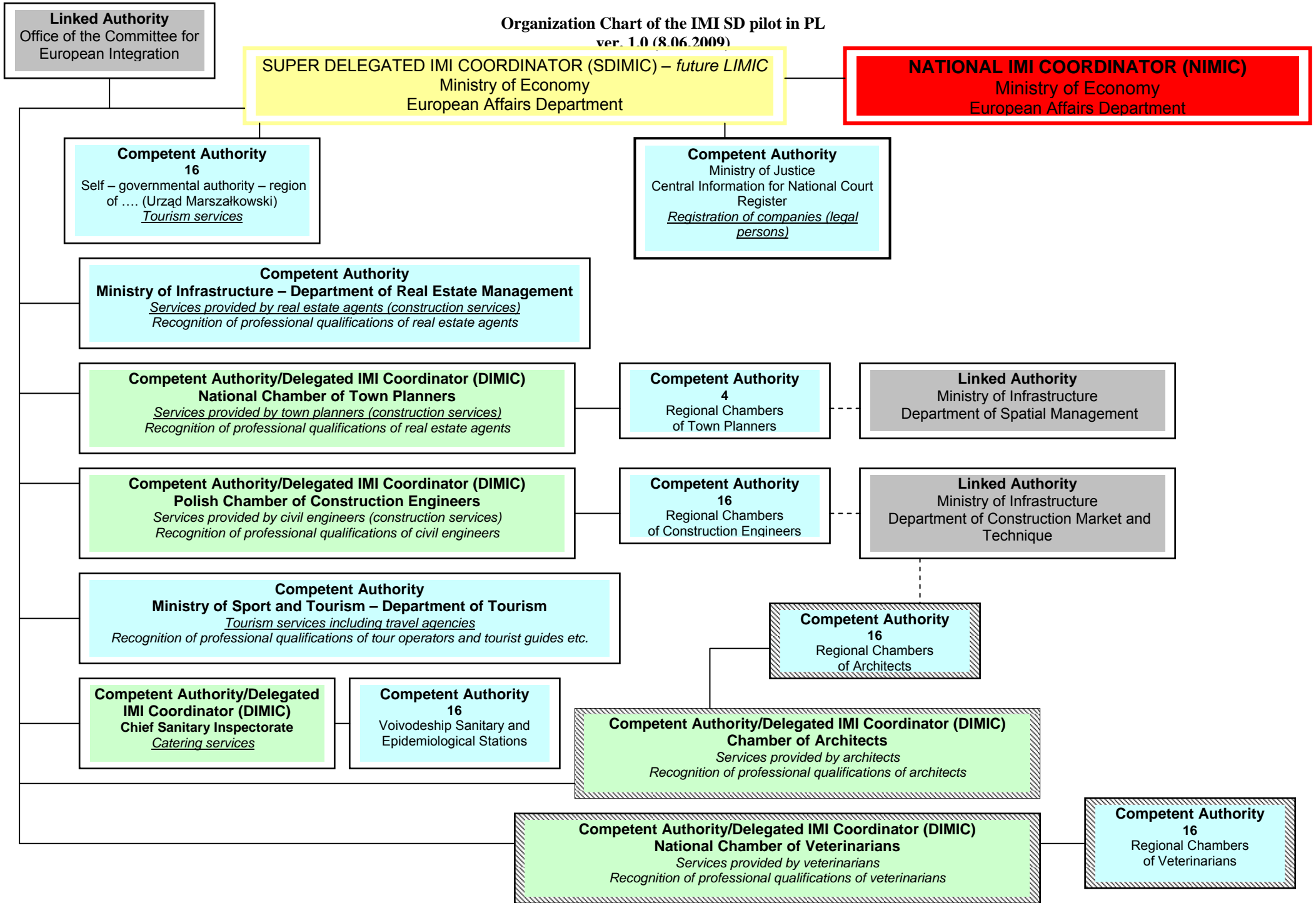


**Organization Chart of the IMI SD pilot in PL**  
ver. 1.0 (8.06.2009)



**Linked Authority**  
Office of the Committee for European Integration

**SUPER DELEGATED IMI COORDINATOR (SDIMIC) – future LIMIC**  
Ministry of Economy  
European Affairs Department

**NATIONAL IMI COORDINATOR (NIMIC)**  
Ministry of Economy  
European Affairs Department

**Competent Authority 16**  
Self – governmental authority – region of ... (Urząd Marszałkowski)  
*Tourism services*

**Competent Authority**  
Ministry of Justice  
Central Information for National Court Register  
*Registration of companies (legal persons)*

**Competent Authority**  
**Ministry of Infrastructure – Department of Real Estate Management**  
*Services provided by real estate agents (construction services)*  
*Recognition of professional qualifications of real estate agents*

**Competent Authority/Delegated IMI Coordinator (DIMIC)**  
**National Chamber of Town Planners**  
*Services provided by town planners (construction services)*  
*Recognition of professional qualifications of real estate agents*

**Competent Authority 4**  
Regional Chambers of Town Planners

**Linked Authority**  
Ministry of Infrastructure  
Department of Spatial Management

**Competent Authority/Delegated IMI Coordinator (DIMIC)**  
**Polish Chamber of Construction Engineers**  
*Services provided by civil engineers (construction services)*  
*Recognition of professional qualifications of civil engineers*

**Competent Authority 16**  
Regional Chambers of Construction Engineers

**Linked Authority**  
Ministry of Infrastructure  
Department of Construction Market and Technique

**Competent Authority**  
**Ministry of Sport and Tourism – Department of Tourism**  
*Tourism services including travel agencies*  
*Recognition of professional qualifications of tour operators and tourist guides etc.*

**Competent Authority 16**  
Regional Chambers of Architects

**Competent Authority/Delegated IMI Coordinator (DIMIC)**  
**Chief Sanitary Inspectorate**  
*Catering services*

**Competent Authority 16**  
Voivodeship Sanitary and Epidemiological Stations

**Competent Authority/Delegated IMI Coordinator (DIMIC)**  
**Chamber of Architects**  
*Services provided by architects*  
*Recognition of professional qualifications of architects*

**Competent Authority/Delegated IMI Coordinator (DIMIC)**  
**National Chamber of Veterinarians**  
*Services provided by veterinarians*  
*Recognition of professional qualifications of veterinarians*

**Competent Authority 16**  
Regional Chambers of Veterinarians